

Meets EURO Stage IIIA & EPA Tier 3

Bucket Capacity	1.4-1.86(1.6) m ³
Rated Power	259 hp(194 kW)@2200 rpm
Net Power	240 hp(180 kW)@2200 rpm
Operating Weight	36200 kg



Engine

Model	CUMMINS QSC8.3
Type	4-cylinder, 4-stroke, in line, water-cooled, diesel engine
Rated power	259 hp(194 kW)@2200 rpm
Net power	240 hp(180 kW)@2200 rpm
Max. torque	1180 N.m
Displacement	8.3 L

Undercarriage

Welded load undercarriage frame ensures outstanding durability in the toughest condition. Idler rollers, carriers rollers, track rollers are sealed with a floating oil seal which requires no lubrication for a long time

Number of carrier rollers	2 each side
Number of track rollers	9 each side
Number of idler rollers	1 each side
Number of shoes	48 each side
Width of track shoes	600 mm

Service Refill Capacity

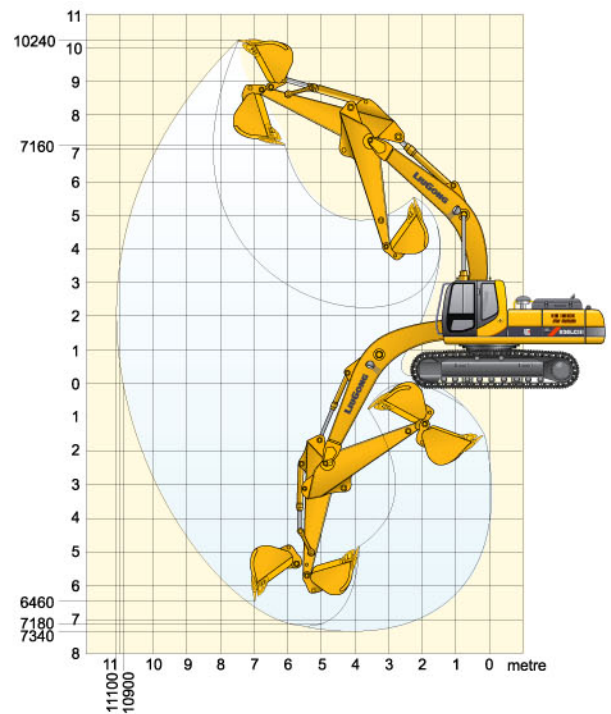
Fuel tank	560 L
Coolant	40 L
Engine lubricants	24 L
Hydraulic system	360 L
Hydraulic tank	240 L

Hydraulic System

Main pump	two variable displacement piston pump
Maximum flow	2 x 280 L/min
Working pressure	36.3 MPa
Pilot pump	gear pump
Swing motor relief valve	27.5 MPa
Main relief valve boom/arm/bucket	36.3 MPa
Traveling circuit	31.4/34.3 MPa
Swing speed	9.5 rpm
Travel speed	high/low: 5.3/3.4 km/h
Gradeability	30°

Working Ranges

Arm length	3,200 mm
Maximum reach	11100 mm
Maximum cutting height	10900 mm
* Maximum digging depth	7340 mm
*Maximum leveling depth 2.5m ground level	7180 mm
* Maximum vertical wall digging depth	6460 mm
* Maximum dumping height	7160 mm
* Maximum digging height	10240 mm
Minimum swing radius	4465 mm
Maximum bucket digging force (ISO)	218/237(moment power) kN
Maximum arm crowd force (ISO)	157/172(moment power) kN



Dimensions (mm)

